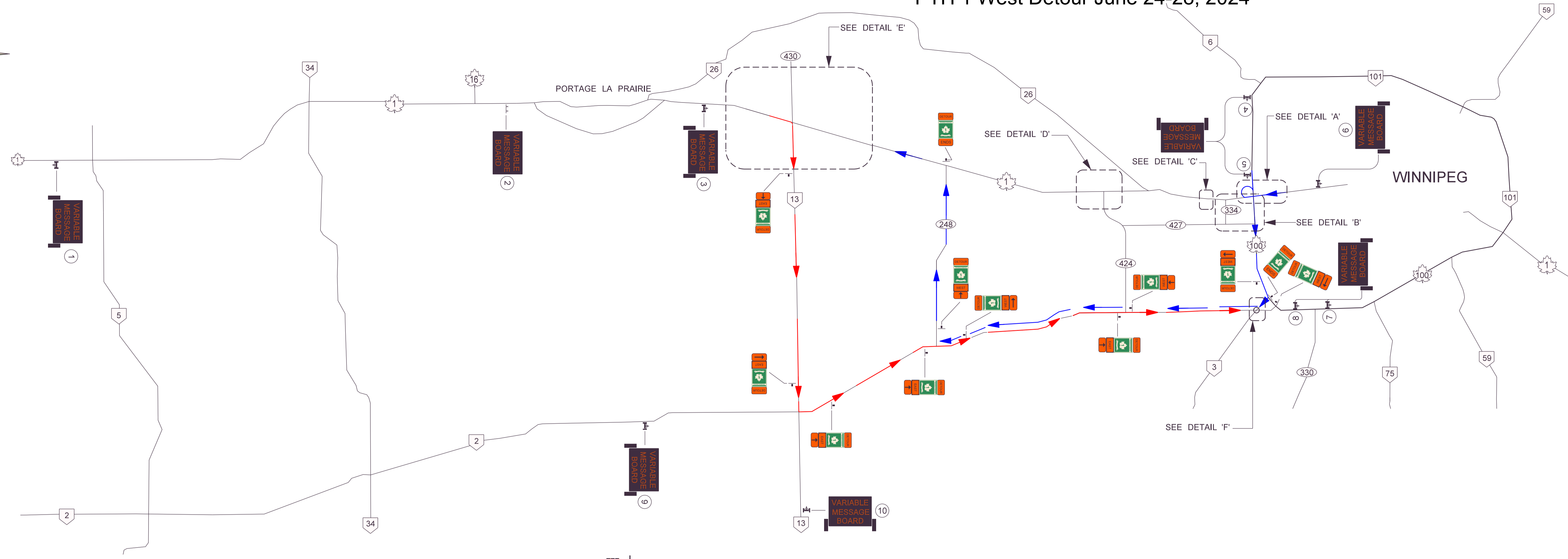
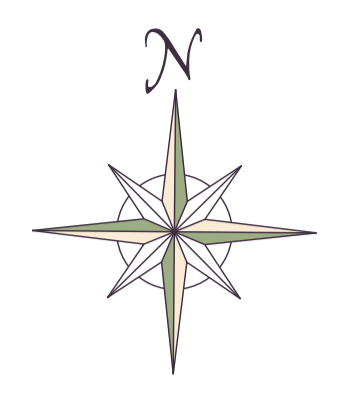


# PTH 1 West Detour June 24-28, 2024



**1**  
VARIABLE MESSAGE SIGN  
HWY 1  
CLOSED AT  
HEADINGLY  
DETOUR  
HWY 13  
IN 105km

**2 3**  
VARIABLE MESSAGE SIGN  
HWY 1  
CLOSED @  
HEADINGLY  
DETOUR  
HWY 13  
TO HWY 2

**4 5 6**  
VARIABLE MESSAGE SIGN  
HWY 1  
CLOSED @  
HEADINGLY  
DETOUR  
HWY 100  
TO HWY 3

**7 8**  
VARIABLE MESSAGE SIGN  
HWY 1  
CLOSED @  
HEADINGLY  
DETOUR  
LEFT AT  
HWY 3

**9 10**  
VARIABLE MESSAGE SIGN  
HWY 1  
DETOUR  
AHEAD  
PROCEED  
WITH  
CAUTION

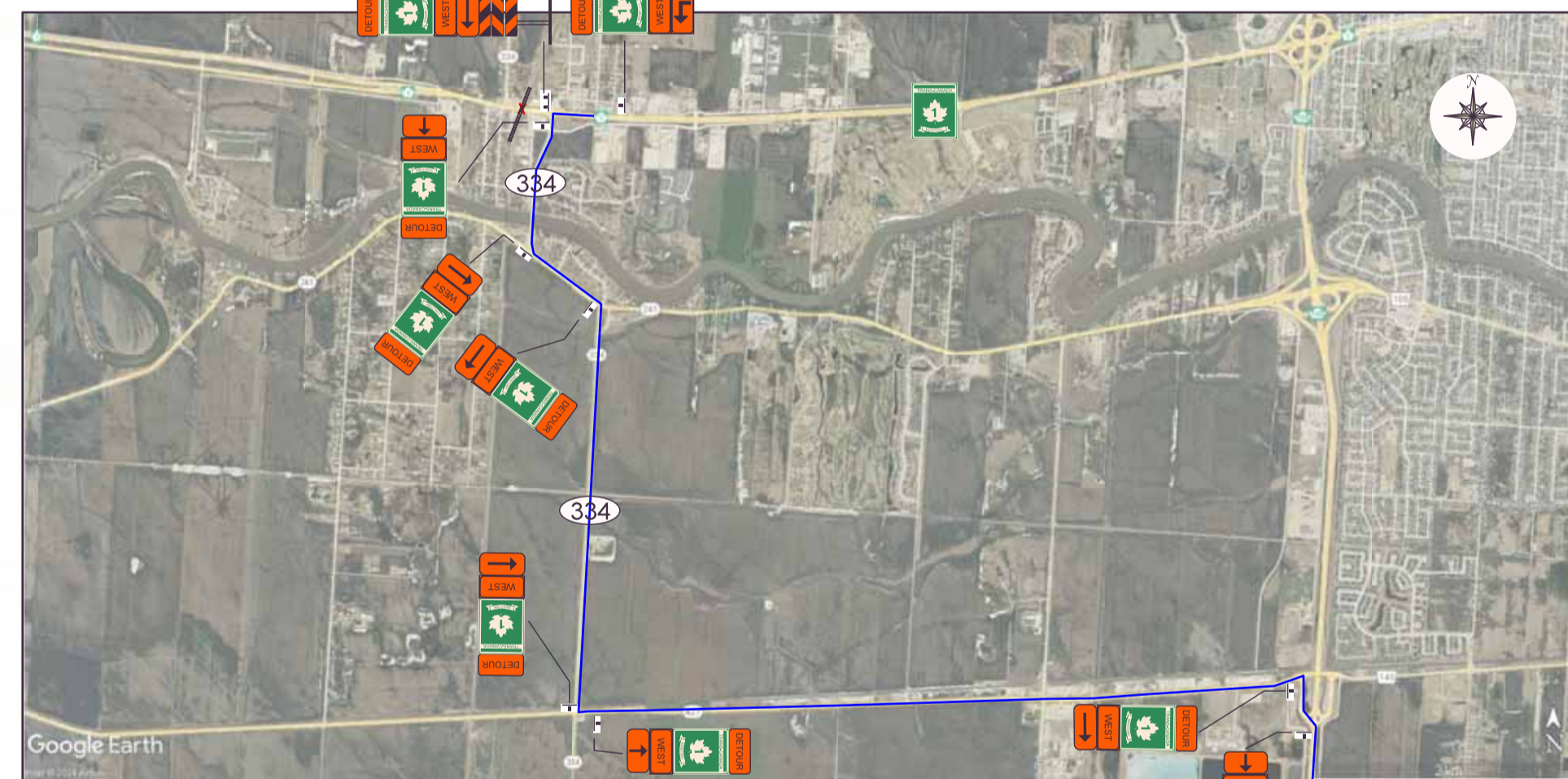
**NOTE:**

1. LCV (Turnpike doubles) will be permitted on the detour route during daylight hours only. Permit holders will need to split the units or pause dispatching over night.

2. Eastbound detour route →  
Westbound detour route ←



DETAIL 'A'



DETAIL 'B'



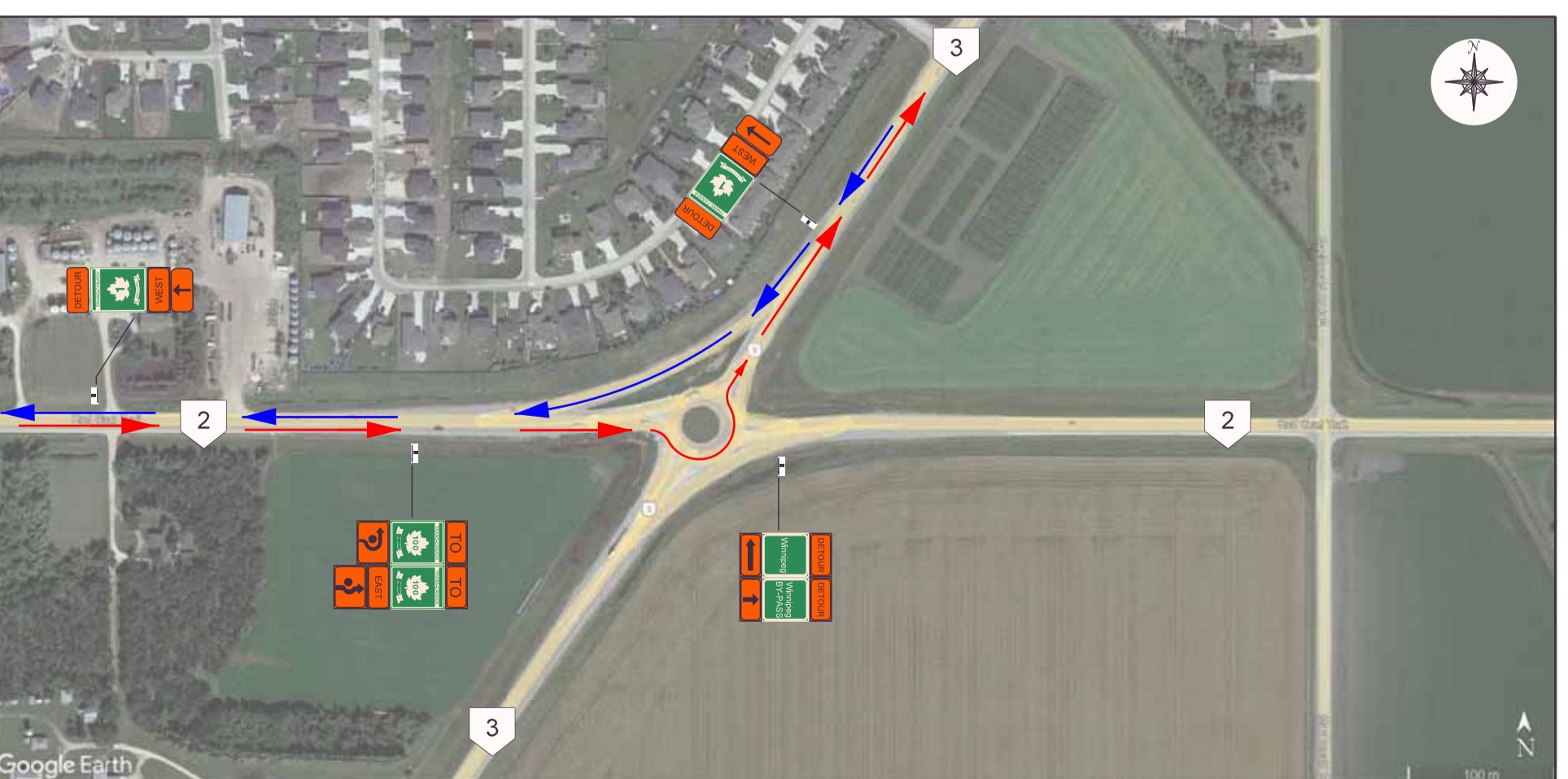
DETAIL 'C'



DETAIL 'D'



DETAIL 'E'



DETAIL 'F'

REVISIONS		SCALE: N.T.S. DATE: 11 2023 PREPARED BY: L.B. REGION: C SIGNING PLAN
DATE: 11/15/23	P.T.H. 1W (HEADINGLY) CP RAILWAY CROSSING FULL CLOSURE ROUTE DETOUR	SHEET 1 OF 1 TE-338b